

Archibus® Assets

Asset Management

Optimize The Use of All Assets Throughout Their Full Operational Lifecycle, from Acceptance Through Operational Use, Repurposing and Disposal

Key Reports, Metrics, Analyses:

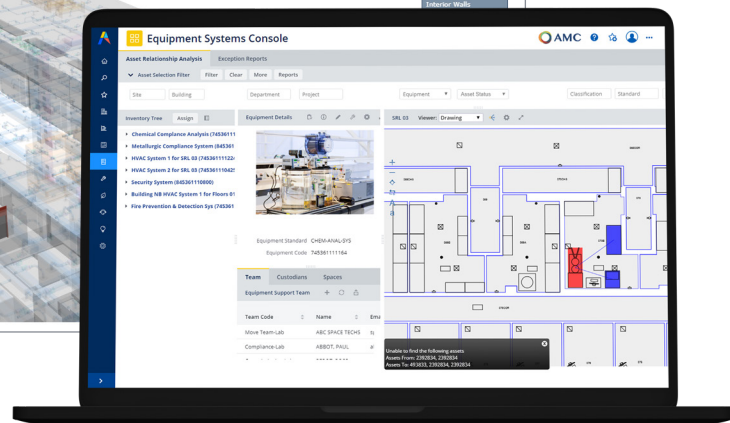
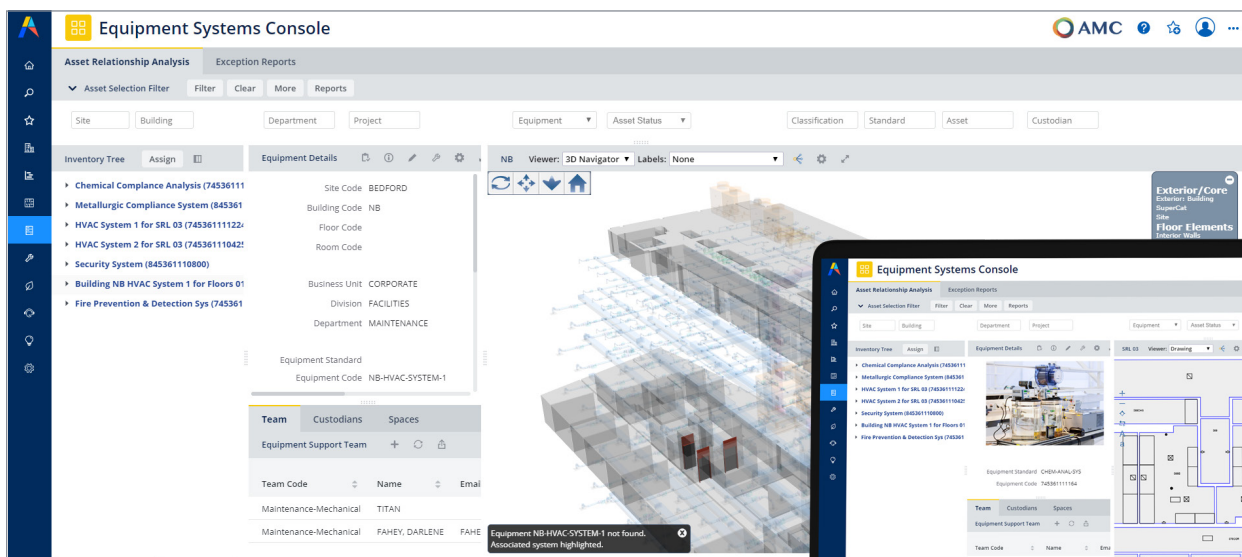
- Asset Location on GIS map
- Asset Metrics: RONA, ROCE, Asset Turnover,
- FCI, Annual Utilization, CRV
- Mission Support Analysis
- Asset Registry and Asset Profiles
- Current and Historical Asset Activities
- All Properties Yearly Financial Summary by Country
- Buildings Dashboard and Building
- Performance Analysis
- Building Sustainability Summary
- Energy Consumption by Location
- Equipment Failure and Equipment Replacement Analysis
- Equipment Warranties and Service Contracts
- Equipment Depreciation Schedules

Asset managers need to provide effective stewardship of assets throughout the full operational lifecycle—from acceptance through operational use, repurposing, and disposal.

Archibus Asset Management provides an integrated view of all assets, including properties, buildings, land, structures, equipment and furniture. Asset Management mobile apps provide point-of-activity interfaces for asset acceptance and field surveys, and Web-based consoles provide transparency into key asset lifecycle data to optimize tactical asset management decisions. These integrated capabilities speed day-to-day decision-making for real estate, infrastructure and facilities operations.

Benefits

- Optimize capital and other asset investments through integrated lifecycle management of asset acquisition, utilization, repurposing, and decommissioning/disposal
- Improve the use of every asset with centralized lifecycle management and tracking
- Reduce excess asset inventory with a clear understanding of actual needs
- Enable better decisions in asset repurposing/replacement choices to avoid unnecessary expenditures
- Facilitate the decommissioning and/or disposal processes of capital equipment and other assets



Drill into asset information with visual data modeling.

Solutions

Enable More Effective and Efficient Operational Processes

Knowing where your assets are and to which individuals or groups they are assigned, and tracking their movement through moves and other reconfigurations and repurposing are ongoing challenges for infrastructure and facilities managers. Archibus Asset Management is an indispensable ally in meeting these challenges.

- Provide accurate HVAC, safety, security, and utilities data describing what assets are in each building and the projects they support
- Improve your ability to repurpose buildings, spaces, and infrastructure by knowing what assets are in each building and their requirements
- Better support day-to-day operations, such as moves and reconfigurations, through an accurate registry of what assets are present and which are affected
- Execute moves rapidly and with fewer errors by having the complete list of furniture, equipment, and other assets connected directly to move orders

Improve Asset Management through Greater Transparency and with Mobile Apps

Archibus Asset Management's advanced capabilities leverage centralized, consistent data to improve transparency and accountability. Making the task easier are mobile apps such as our Asset & Equipment Registration and Asset & Equipment Survey for convenient, real-time data collection and access, as well as our Asset & Equipment Registration form, which speeds entry of assets into the asset registry.

- Optimize every asset's use through integrated lifecycle management of all assets
- Improve accountability by centrally monitoring and tracking all changes throughout an asset's lifecycle
- Reduce excess inventory/warehousing levels with better understanding of asset requirements
- Lower asset management process costs through clear understanding of each asset's lifecycle status
- Visually locate assets by leveraging existing space backbone data for space allocation/chargeback data

Improve Governance and Manage Risk

Not complying with environmental, healthcare, and other regulatory requirements could result in heavy fines and even business closure. To ensure that such requirements are met, and met in a timely fashion, Asset Management gives managers a suite of capabilities to make this job easier.

- Ensure compliance with financial procedures and contractual regulations by tracking asset control and project assignment
- Reduce environmental impact through increased reuse and utilization of existing assets
- Produce a complete end-of-life audit trail for each asset to minimize tax liabilities and eliminate environmental penalties upon disposal

Use Integrated Asset Lifecycle Data for Asset and Business Continuity Planning

Keeping organizations operating smoothly means knowing how and when to make the right fix/buy/replace or repurpose/dispose decisions for assets that affect worker productivity and business continuity. Infrastructure and facility managers benefit from the range of analytical tools provided by Asset Management to optimize asset cost-effectiveness.

- Make better decisions in repurposing and replacement choices with instant access to key asset lifecycle data such as ownership, value, location, use, status and condition
- Avoid unnecessary downtime or business discontinuity through proactive management of at-risk assets
- Improve warranty recovery by tracking warranties and in-service dates in the same system used for maintenance requests
- Build an accurate list of equipment under your control to help prevent failures due to neglect

For More Information Visit www.archibus.ro



Archibus is the global leader for managing facilities, infrastructure, and real estate. Our industry leading IWMS provides organizations the ability to gain full insights into their built-environments to reduce costs, optimize operations, and elevate their employee experiences. Our solutions are designed to offer enterprise-level asset management, reporting, data and infrastructure management in a single system.